



Worksharing

Melanie Tristram

Jasmax

Jasmax



Overview

- What is Worksharing?
- Basic Principles
 - Central File
 - Local File
 - Workset Types
- Best Practice
 - Workset Division
 - Workset Management
 - STC
- What to avoid
- Tips for Worksharing



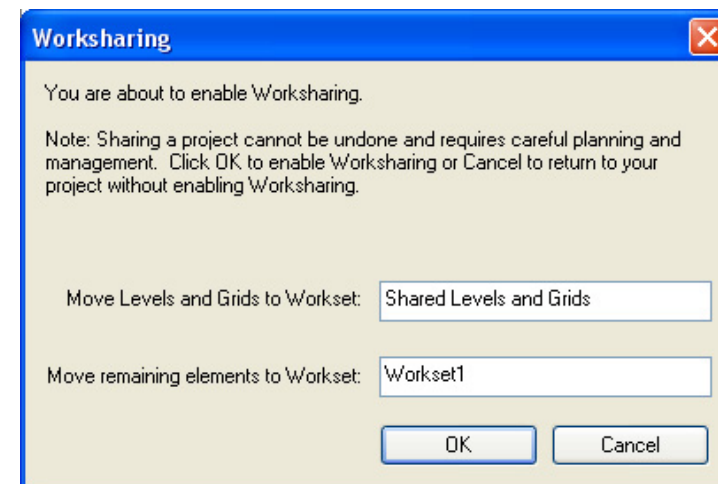
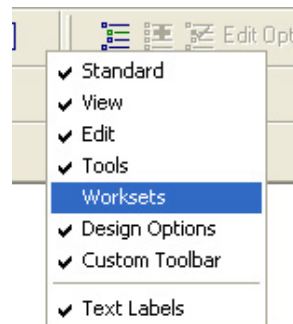
What is Worksharing?

- Worksharing refers to the use of Worksets to divide up the model for the purpose of sharing data between many people working on the one file.
- A Workset is the collection of building elements and components that can be edited by any one team member.
- Worksets enable additional visibility options, file management and PC performance



Basic Principles – Central File

- When you activate Worksharing you create a Central File, which resides on your server.
- The Central file manages element ownership.
- Do not work directly in the Central File





Basic Principles – Local File

- Once you have created your central file, each user is able to create a Local file.
- Local files reside on each users C Drive
- All changes are uploaded to the Central file by performing a Save to Central (STC)



Basic Principles – Workset Types

- User Worksets
 - Worksets created by users for a collection of elements
- View Worksets
 - View Specific elements, text, dimensions etc
- Family Worksets
 - Each family loaded into a project is allocated a workset
- Project Standards
 - All project settings such as materials, line styles, tags etc



Best Practice – Workset Division

- Divide the project related to roles and responsibilities of people working on the project, for example.
 - Core
 - Shell
 - Interior
 - Site
 - Levels & Grids
- Additional worksets for visibility & performance
 - Linked RVT
 - Linked DWG

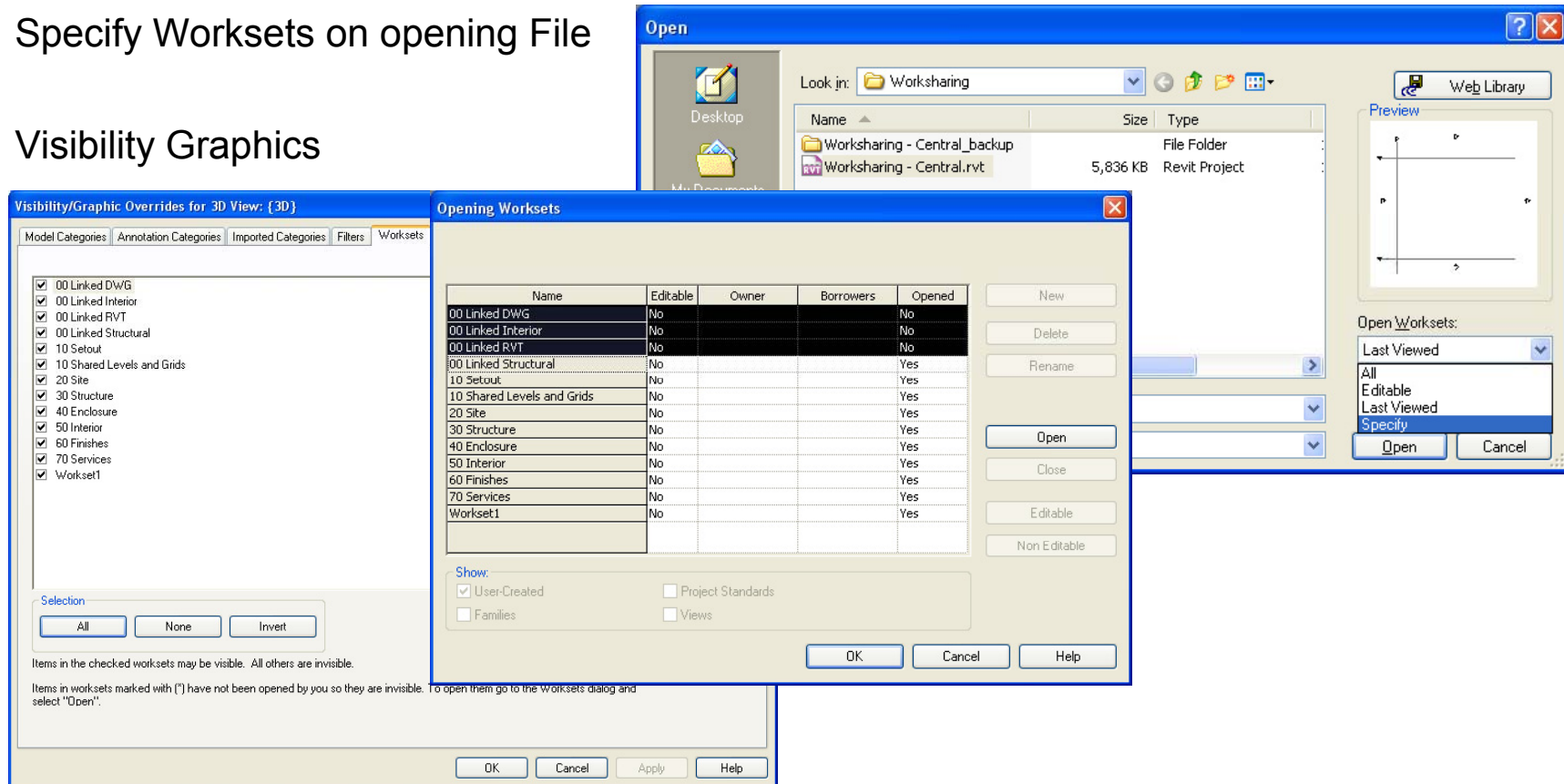


Best Practice – Workset Division

- Jasmx Workset Naming example:
 - 00 Linked RVT
 - 00 Linked DWG
 - 10 Levels & Grids
 - 10 Setout (reference planes)
 - 20 Site
 - 30 Structure
 - 40 Enclosure
 - 50 Interior
 - 60 Finishes
 - 70 Services

Best Practice – Workset Management

- Specify Worksets on opening File
- Visibility Graphics



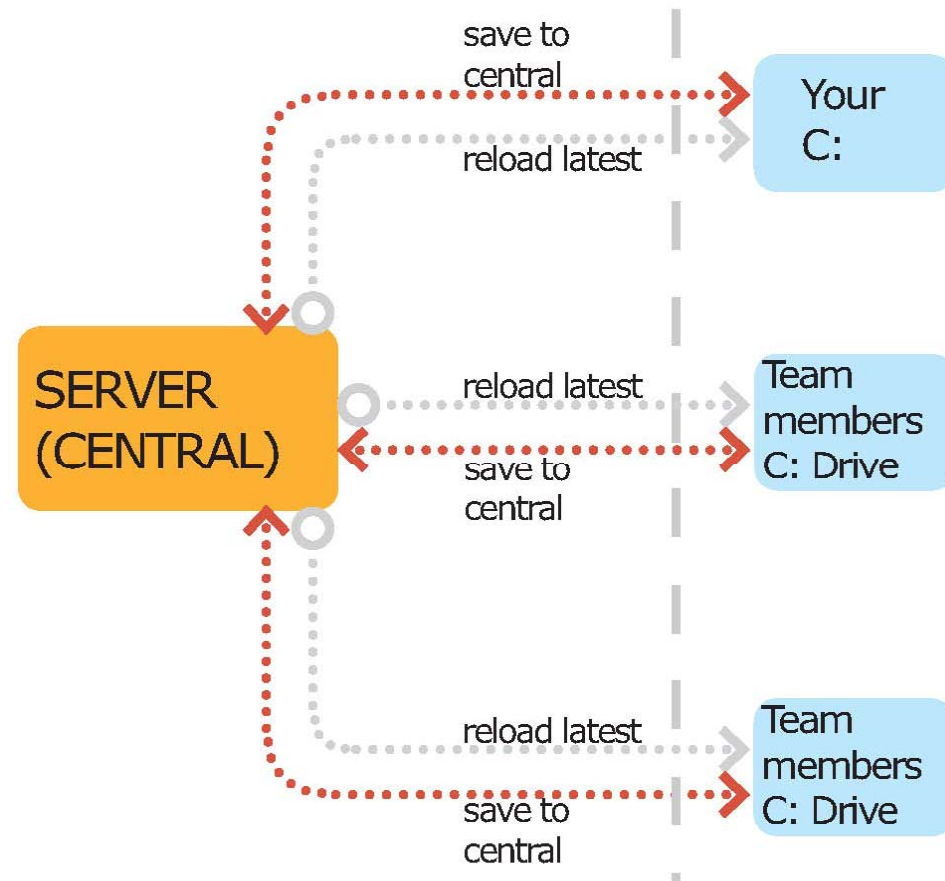
The screenshot displays three overlapping dialog boxes in Revit:

- Opening Worksets:** A table showing the status of various worksets. The 'Opened' column indicates which worksets are currently open.
- Visibility/Graphic Overrides for 3D View: [3D]:** A list of model categories with checkboxes for visibility. The 'Workset1' category is checked.
- Open:** A file selection dialog showing the 'Worksharing' folder containing 'Worksharing - Central_backup' and 'Worksharing - Central.rvt'.

Name	Editable	Owner	Borrowers	Opened
00 Linked DWG	No			No
00 Linked Interior	No			No
00 Linked RVT	No			No
00 Linked Structural	No			Yes
10 Setout	No			Yes
10 Shared Levels and Grids	No			Yes
20 Site	No			Yes
30 Structure	No			Yes
40 Enclosure	No			Yes
50 Interior	No			Yes
60 Finishes	No			Yes
70 Services	No			Yes
Workset1	No			Yes

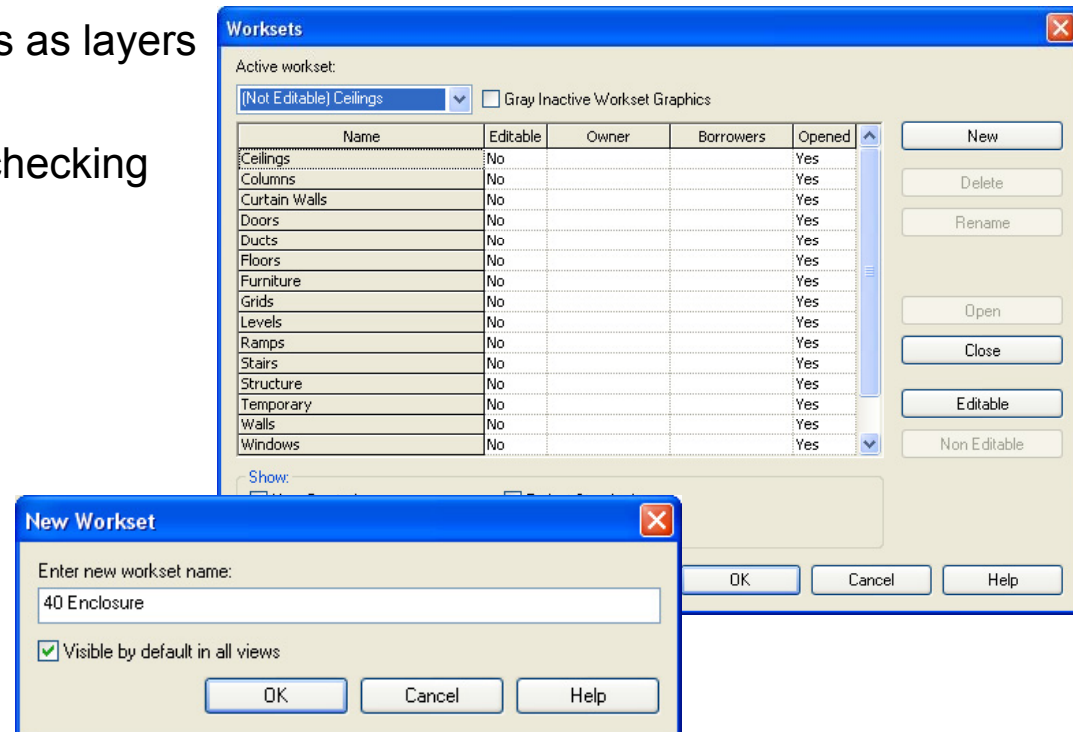
Best Practice – STC

- Save your local
- Reload latest
- Save your local
- STC



What to Avoid

- Being tempted to use worksets as layers
- When creating worksets – unchecking visible by default in all views
- Working in Central File





Tips

- Locking out Worksets
- Moving elements from workset to workset – utilise a 3D view



Thank you

Questions ?

Melanie Tristram

Jasmax ■